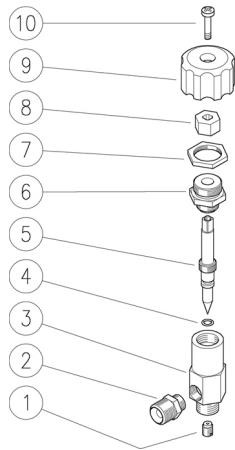


29.0920.08 RV1 steam val. 1/4MM Bsp d.0,8mm

29.0920.12 RV1 steam val. 1/4MM Bsp d.1,2mm

29.0920.15 RV1 steam val. 1/4MM Bsp d.1,5mm



29.0920.20 RV1 steam valv.2,0mm red hand.

29.0920.65 RV1 steam val. 1/4MM Bsp d.1,5mm black

29.0920.82 RV1 steam val.1/4MM Bsp d.1,2mm-blue han.

Pos.	P/N	Description	Q.ty	K1	K2	K3	K4	
1	29.0941.51R	Nozzle, 0,8 mm M6x8 Sst. (1)	1	•				5
1	29.0942.51R	Nozzle, 1,2 mm M6x8 Sst. (2,3)	1	•				5
1	29.0943.51R	Nozzle, 1,5 mm M6x8 Sst. (4,5)	1	•				5
1	29.0944.51R	Nozzle, 2,0 mm M6x8 Sst. (6)	1					5
2	29.0926.31R	Coupling, 1/4M-1/8M Bsp c/sunk brass (6)	1					10
3	29.0921.31R	Casing -RV1, 1/4Bsp M brass	1					10
4	10.3043.01R	O-ring, 1,78x4,48 mm Vi 70	1	•				10
5	29.0922.51R	Shutter pin, M10x1 Sst.	1					5
6	29.0923.31R	Nipple, 3/8Bsp M-1/4Bspt M brass	1					5
7	29.0932.31R	Locknut, 3/8Bsp F brass	1					10
8	29.0924.31R	Groove nut, brass	1					10
9	29.0931.84R	Knob, PA black (5)	1					10
9	29.0930.84R	Knob, PA blue (5,3)	1					10
9	29.0927.84R	Knob, PA red (1,2,4,6)	1					10
10	16.1840.00R	Screw, DIN7985 M4x14 mm z.pl.	1					10

Kit	P/N	Description	
K1	29.0934.24	Spares kit -RV1, 2x4pcs.	1

(1) 29.0920.08 (2) 29.0920.12 (3) 29.0920.82 (4) 29.0920.15 (5) 29.0920.65
(6) 29.0920.20