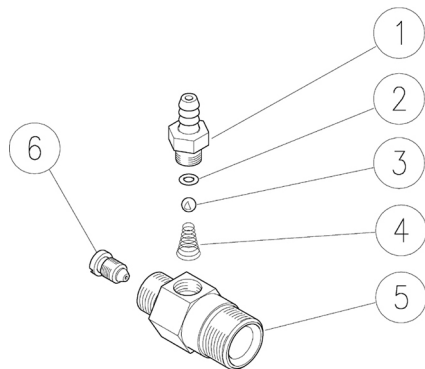



21.0030.18 Inject.,fix.,3/8M Bsp-M22 1,8mm nzl

21.0030.21 Inject.,fix.,3/8M Bsp-M22 2,1mm nzl



21.0030.23 Inject.,fix.,3/8M Bsp-M22 2,3mm nzl

Pos.	P/N	Description	Q.ty	K1	K2	K3	K4	
1	21.0003.31R	Hose barb, 8 - M12x1 mm brass	1					10
2	10.3049.00R	O-ring, 1,78x5,28 mm Vi 70	1	•				10
3	14.7420.01R	Ball, 7/32" Sst. Aisi 316	1	•				10
4	21.0160.51R	Tapered spring, Sst. -inject.	1	•				10
5	21.0166.31R	Inject.housing, 3/8M Bsp-M22x1,5 M brs.	1					3
6	21.0006.51R	Nozzle, M8x1 - 1,2 mm Sst.	1					10
6	21.0007.51R	Nozzle, M8x1 - 1,5 mm Sst.	1					10
6	21.0002.51R	Nozzle, M8x1 - 1,8 mm Sst. (1)	1					10
6	21.0004.51R	Nozzle, M8x1 - 2,1 mm Sst. (2)	1					10
6	21.0157.51R	Nozzle, M8x1 - 2,3 mm Sst. (3)	1					10

Kit	P/N	Description	
K1	21.0010.24	Spares kit -fix.inject. 3x10 pcs.	1

(1) 21.0030.18 (2) 21.0030.21 (3) 21.0030.23