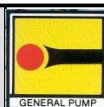


SERIE 76

- * Fissare con Loctite 542 col. ROSSO
- * Affix with Loctite 542 col. RED
- * Fixer avec de la Loctite 542 couleur ROUGE
- * Mit Loctite 542 ROT befestigen
- * Fijar con Loctite 542 col. ROJO
- * Fixar com Loctite 542 cor. VERMELHA



KIT RICAMBI – SPARE KITS

PISTONE – PISTON Ø 30

PISTONE – PISTON Ø 45

**W6 – W8 – T61 – T81
W155 - T1551**

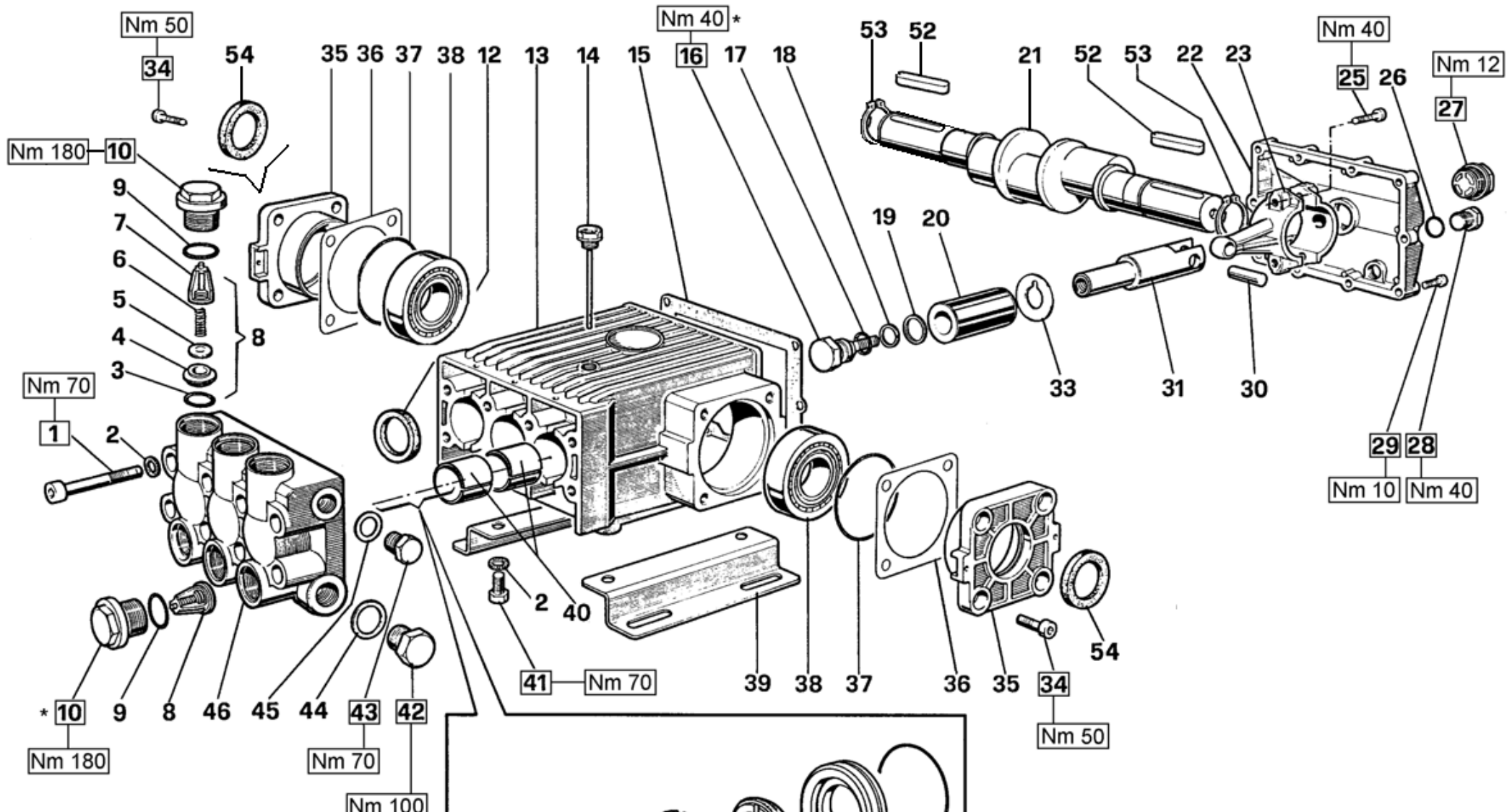
KIT Nr.	KIT 32	KIT 43	KIT 44	KIT 74	KIT 65	KIT 66	KIT 113	KIT 114	KIT 115	KIT 47	KIT 48	KIT 79	KIT 80	KIT 81
Posizioni incluse Positions included	54	3 - 4 5 - 6 - 7 (8)	12	16 - 17 18 - 19	50	51	32 - 49 55	47 - 48	32 - 47 48 - 49 50 - 51 55	47 - 48	50	32 - 49 55	32 - 47 48 - 49 50 - 51 55	32 - 51
Nr. Pcs.	2	6	3	3	6	3	3	3	1	6	3	3	1	1

PISTONE – PISTON Ø 30	PISTONE – PISTON Ø 45
W155 – T1551	W6 – W8 – T61 – T81

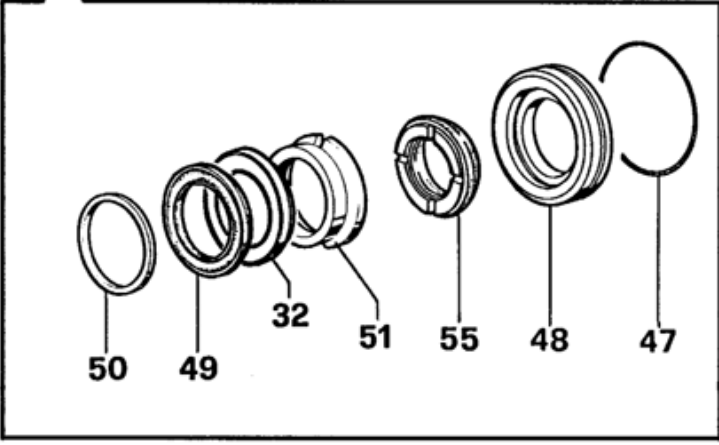
POS	COD.	DESCRIZIONE – DESCRIPTION – KIT	NR
20	76.0400.56 76.0402.09	Pistone Ø 30x70 Pistone Ø 45x70	3 3
21	76.0210.35 76.0211.35	Albero – W155-T1551-W8-T81 Albero – W6-T61	1 1
22	76.1600.22	Coperchio posteriore carter	1
23	76.0303.01	Biella – Completa	3
25	99.3720.00	Vite M10x45 UNI 5931 – Zinc.	6
26	90.3833.00	OR Ø 13.95x2.62 (3056)	2
27	97.5968.00	Spia livello olio	1
28	98.2100.50	Tappo G 3/8"x13 TE22 – Zinc.	2
29	99.1897.00	Vite M6x25 UNI 5931 – Zinc.	10
30	97.7400.00	Spinotto Ø 14x34.5	3
31	77.0500.54	Guida pistone	3
32	90.2774.00 90.2848.00	Anello RESTOP Ø 30x45x8/4.5 Anello RESTOP Ø 45x60x6.5/3	113-115 79-80-81
33	96.7568.00	Rosetta Ø 22.3x51x0.5	3
34	99.3652.00	Vite M10x20 UNI 5931	8
35	76.1500.22	Coperchio laterale carter	1
36	76.2200.78	Spessore	4
37	90.4141.00	OR Ø 85.32x3.53 (4337)	2
38	91.8474.00	Cuscinetto a rulli conici	2
39	76.2000.74	Piedino	2

POS	COD.	DESCRIZIONE – DESCRIPTION - KIT	NR
40	90.9172.00 90.9174.00	Boccola Ø 35x39x30 Boccola Ø 35x39x50	6 3
41	99.4266.00	Vite M12x25 UNI 5739 – Zinc.	4
42	98.2325.00	Tappo G 1"x17	1
43	98.2265.00	Tappo G 3/4"x16	1
44	96.7870.00	Rosetta Ø 33.5x38x1.5	1
45	96.7700.00	Rosetta Ø 26.5x32x1.5	1
46	76.1210.41 76.1200.41	Testata pompa – W6 W8 T61 T81 Testata pompa – W155 T1551	1 1
47	90.3903.00	OR Ø 60x2.62 (3237)	47-80-114-115
48	76.0800.70 76.0802.70	Anello di fondo Ø 30 Anello di fondo Ø 45	114-115 47-80
49	90.2770.00 90.2850.00	Anello ten. alt. Ø 30x45x7.5/4.5 HP Anello ten. alt. Ø 45x60x7.5/4.5 HP	113-115 79-80
50	69.1000.51 76.1002.51	Anello di testa Ø 30 Anello di testa Ø 45	65-115 48-80
51	69.2167.70 76.2170.70	Anello intermedio Ø 30 Anello intermedio Ø 45	66-115 80-81
52	91.4978.00	Linguetta 10x8x55 UNI 7435	1
53	90.0695.00	Anello di arresto Ø 35 UNI 7435	1
54	90.1672.00	Anello rad. Ø 35x52x8	32
55	90.2776.00 90.2855.00	Anello ten. alt. Ø 30x45x9.5 LP Anello ten. alt. Ø 45x60x9 LP	113-115 79-80

POS	COD.	DESCRIZIONE – DESCRIPTION - KIT	NR
1	99.4418.00	Vite M12x90 UNI 5931 – Zinc.	8
2	96.7195.00	Rosetta Ø 13x18x1.1	12
3	90.4059.00	OR Ø 32.93x3.53 (4131) – Spec.	43 6
4	36.2011.66	Sede valvola	43 6
5	36.2010.76	Valvola	43 6
6	94.7450.00	Molla Ø 16x27.5	43 6
7	36.2009.51	Guida valvola	43 6
8	36.7065.01	Gruppo valvola aspiraz./mand.	43 6
9	90.4065.00	OR Ø 37.69x3.53 (4150)	6
10	98.2420.00	Tappo M42x1.5x23	6
11	76.1501.22	Coperchio laterale carter	1
12	90.1670.00	Anello rad. Ø 35x52x7	44 3
13	76.0100.22 76.0102.01	Carter pompa – W6-W8-T61-T81 Carter pompa + boccole – W155-T1551	1 1
14	98.2270.00	Tappo carico olio	1
15	76.2119.84	Guarnizione coperchio posteriore	1
16	69.2195.66	Vite fissaggio pistone	74 3
17	90.3841.00	OR Ø 17.13x2.62 (3068)	74 3
18	90.5107.00	Anello antiest. Ø17.4x22x1.15	74 3
19	96.7555.00	Rosetta Ø 22x27x0.5	74 3

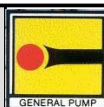


**CON ALBERO A DOPPIA PRESA DI FORZA
WITH DOUBLE-SIDED SHAFT**



SERIE 76

* Fissare con Loctite 542 col. ROSSO
 * Affix with Loctite 542 col. RED
 * Fixer avec de la Loctite 542 couleur ROUGE
 * Mit Loctite 542 ROT befestigen
 * Fijar con Loctite 542 col. ROJO
 * Fixar com Loctite 542 cor. VERMELHA

**KIT RICAMBI – SPARE KITS****PISTONE – PISTON Ø 30****PISTONE – PISTON Ø 45****W6 – W8 – T61 – T81
W155 - T1551**

KIT Nr.	KIT 32	KIT 43	KIT 44	KIT 74	KIT 65	KIT 66	KIT 113	KIT 114	KIT 115	KIT 47	KIT 48	KIT 79	KIT 80	KIT 81
Posizioni include Positions included	54	3 - 4 5 - 6 - 7 (8)	12	16 - 17 18 - 19	50	51	32 - 49 55	47 - 48	32 - 47 48 - 49 50 - 51 55	47 - 48	50	32 - 49 55	32 - 47 48 - 49 50 - 51 55	32 - 51
Nr. Pcs.	2	6	3	3	6	3	3	3	1	6	3	3	1	1

PISTONE – PISTON Ø 30	PISTONE – PISTON Ø 45
W155 – T1551	W6 – W8 – T61 – T81

POS	COD.	DESCRIZIONE – DESCRIPTION – KIT	NR
20	76.0400.56 76.0402.09	Pistone Ø 30x70 Pistone Ø 45x70	3 3
21	76.0204.35 76.0205.35	Albero D.PTO - W155-T1551-W8-T81 Albero D.PTO - W6-T61	1 1
22	76.1600.22	Coperchio posteriore carter	1
23	76.0303.01	Biella – Completa	3
25	99.3720.00	Vite M10x45 UNI 5931 – Zinc.	6
26	90.3833.00	OR Ø 13.95x2.62 (3056)	2
27	97.5968.00	Spia livello olio	1
28	98.2100.50	Tappo G 3/8"x13 TE22 – Zinc.	2
29	99.1897.00	Vite M6x25 UNI 5931 – Zinc.	10
30	97.7400.00	Spinotto Ø 14x34.5	3
31	77.0500.54	Guida pistone	3
32	90.2774.00 90.2848.00	Anello RESTOP Ø 30x45x8/4.5 Anello RESTOP Ø 45x60x6.5/3	3 3
33	96.7568.00	Rosetta Ø 22.3x51x0.5	3
34	99.3652.00	Vite M10x20 UNI 5931	8
35	76.1500.22	Coperchio laterale carter	2
36	76.2200.78	Spessore	4
37	90.4141.00	OR Ø 85.32x3.53 (4337)	2
38	91.8474.00	Cuscinetto a rulli conici	2
39	76.2000.74	Piedino	2

POS	COD.	DESCRIZIONE – DESCRIPTION - KIT	NR
40	90.9172.00 90.9174.00	Boccola Ø 35x39x30 Boccola Ø 35x39x50	6 3
41	99.4266.00	Vite M12x25 UNI 5739 – Zinc.	4
42	98.2325.00	Tappo G 1"x17	1
43	98.2265.00	Tappo G 3/4"x16	1
44	96.7870.00	Rosetta Ø 33.5x38x1.5	1
45	96.7700.00	Rosetta Ø 26.5x32x1.5	1
46	76.1210.41 76.1200.41	Testata pompa – W6 W8 T61 T81 Testata pompa – W155 T1551	1 1
47	90.3903.00	OR Ø 60x2.62 (3237) 47-80-114-115	3
48	76.0800.70 76.0802.70	Anello di fondo Ø 30 Anello di fondo Ø 45	114-115 47-80 3 3
49	90.2770.00 90.2850.00	Anello ten. alt. Ø 30x45x7.5/4.5 HP Anello ten. alt. Ø 45x60x7.5/4.5 HP	113-115 79-80 3 3
50	69.1000.51 76.1002.51	Anello di testa Ø 30 Anello di testa Ø 45	65-115 48-80 3 3
51	69.2167.70 76.2170.70	Anello intermedio Ø 30 Anello intermedio Ø 45	66-115 80-81 3 3
52	91.4978.00	Linguetta 10x8x55 UNI 7435	2
53	90.0695.00	Anello di arresto Ø 35 UNI 7435	2
54	90.1672.00	Anello rad. Ø 35x52x8	32 2
55	90.2776.00 90.2855.00	Anello ten. alt. Ø 30x45x9.5 LP Anello ten. alt. Ø 45x60x9 LP	113-115 79-80 3 3

POS	COD.	DESCRIZIONE – DESCRIPTION - KIT	NR
1	99.4418.00	Vite M12x90 UNI 5931 – Zinc.	8
2	96.7195.00	Rosetta Ø 13x18x1.1	12
3	90.4059.00	OR Ø 32.93x3.53 (4131) – Spec.	43 6
4	36.2011.66	Sede valvola	43 6
5	36.2010.76	Valvola	43 6
6	94.7450.00	Molla Ø 16x27.5	43 6
7	36.2009.51	Guida valvola	43 6
8	36.7065.01	Gruppo valvola aspiraz./mand.	43 6
9	90.4065.00	OR Ø 37.69x3.53 (4150)	6
10	98.2420.00	Tappo M42x1.5x23	6
12	90.1670.00	Anello rad. Ø 35x52x7	44 3
13	76.0100.22 76.0102.01	Carter pompa – W6-W8-T61-T81 Carter pompa + boccole – W155-T1551	1 1
14	98.2270.00	Tappo carico olio	1
15	76.2119.84	Guarnizione coperchio posteriore	1
16	69.2195.66	Vite fissaggio pistone	74 3
17	90.3841.00	OR Ø 17.13x2.62 (3068)	74 3
18	90.5107.00	Anello antiest. Ø17.4x22x1.15	74 3
19	96.7555.00	Rosetta Ø 22x27x0.5	74 3